



ECS Florida, LLC

Geotechnical • Construction Materials • Environmental • Facilities

"One Firm. One Mission."

12/8/2022

Mr. Chris Lall
Project Manager
Bohler Engineering
1900 NW Corporate Boulevard
Suite 101E
Boca Raton, FL 33431

ECS Project No. 55:5445

Reference: Results for Landscape Tree Appraisal, NW 33rd Street Pompano Beach, NW 33rd Street & NW 27th Avenue, Pompano Beach, Broward County, Florida

Dear Mr. Lall:

ECS Florida, LLC (ECS) is pleased to provide you with the results of our Landscape Tree Appraisal for the referenced site. ECS services were provided in general accordance with ECS Proposal No. 55:8475 authorized on November 12, 2022.

If there are questions regarding this report, or a need for further information, please contact the undersigned.

Sincerely,

ECS Florida, LLC

Joe Brinson
Senior Project Manager
jlbrinson@ecslimited.com
904-880-0960

Jason Adams
Natural Resources Department Manager
jadams2@ecslimited.com
813.302.1644

DRC

PZ23-12000019
08/16/2023

1.0 POMPANO PROTECTED TREE APPRAISAL

I. INTRODUCTION

ECS ISA Certified Arborist Joseph Brinson (FL-6626A) performed a protected tree appraisal on a parcel off NW 33rd Street, more specifically located at 3030 N.W. 33rd Street, Pompano Beach, Broward County, Florida. According to the Broward County Online GIS website, the subject property is identified as Parcel Identification Number (PIN) 4842 21 07 0070 and consists of approximately 10 acres. The site consists of a parking lot. Attached is a general location map for reference. The parking lot is proposed for redevelopment. The redevelopment of the parcel will require removal of the landscape trees onsite. This report provides information to assist in compliance with City of Pompano Beach Code of Ordinances.

II. METHODOLOGY

The purpose of this review was to determine health and structure of the landscape trees and determine the appraisal value based on Rule 14-19.057, F.A.C., effective October, 2020. A review of each protected tree's health and structural condition was performed, documenting defects observed and determining a Conditional Rating of each tree. Furthermore, five (5) wholesale plant nurseries prices for the species found onsite were used to determine the mitigation values located in the enclosed chart, specifically appraisal methodology #2 was utilized to determine mitigation values. In addition, a planting cost of \$50 was used in the formula to determine total mitigation value.

Wholesale Plant Nursery

Cocoplum Group LLC - 813-997-7758
Gleason Landscaping LLC - 321-749-7326
Freund Flowering Trees - 305-242-5651
Top Tropicals - 239-689-5745
Native Tree Nursery Inc. - 305-247-4499

Species (Common Name)	Cost per inch(\$)
Live Oak	\$22.61
Gumbo Limbo	\$24.29
Button Mangrove	\$21.75
Shortleaf Fig	\$15.00
Orchid Tree	\$12.81
Sabal Palm (per ft)	\$26.68

III. RESULTS

During the arborist investigation, a total of 67 landscape trees and 19 palms were reviewed, with 43 trees and three (3) palms being discounted due to poor arboricultural condition. More specifically, wind damage, rot, included bark, and canopy dieback. In addition, numerous trees proposed to be removed contained protruding roots and will likely be damaged by the milling of the parking lot asphalt; therefore relocation is not appropriate.

Out of the 67 landscape trees reviewed, 24 were determined to have a good condition rating, while 43 were determined to have a poor to very poor condition rating.

The onsite 19 Sabal palms were generally reviewed with 16 being healthy and having good condition rating. These 16 Sabal healthy palm trees can be relocated, if plans allow. Please refer to enclosed Tree Disposition Chart.

All trees to remain and trees to be relocated will be pruned in accordance with American National Standard (ANSI) A300 Pruning Standards. Please refer to Table 1 - Tree Disposition Chart.

The total mitigation value if all trees were to be removed is \$14,790.14.

All trees to remain within work limits will have tree barricades, based on the vegetation protection criteria, and county approval should be obtained prior to demolition, clearing and site work. No construction traffic, cutting, filling, staging trenching, or root compaction within tree barricade. Barriers will be erected around tree to remain with 4-inch DBH and greater. Please refer to detail in Landscape Disposition Plan.

All tree relocations will be performed by a County approved contractor. Contractor will relocate trees in accordance with ANSI for Tree Care Operations Tree, Shrub, and Other Woody Plant Maintenance Standard Practices (Transplanting) ANSI A300(Part 6).

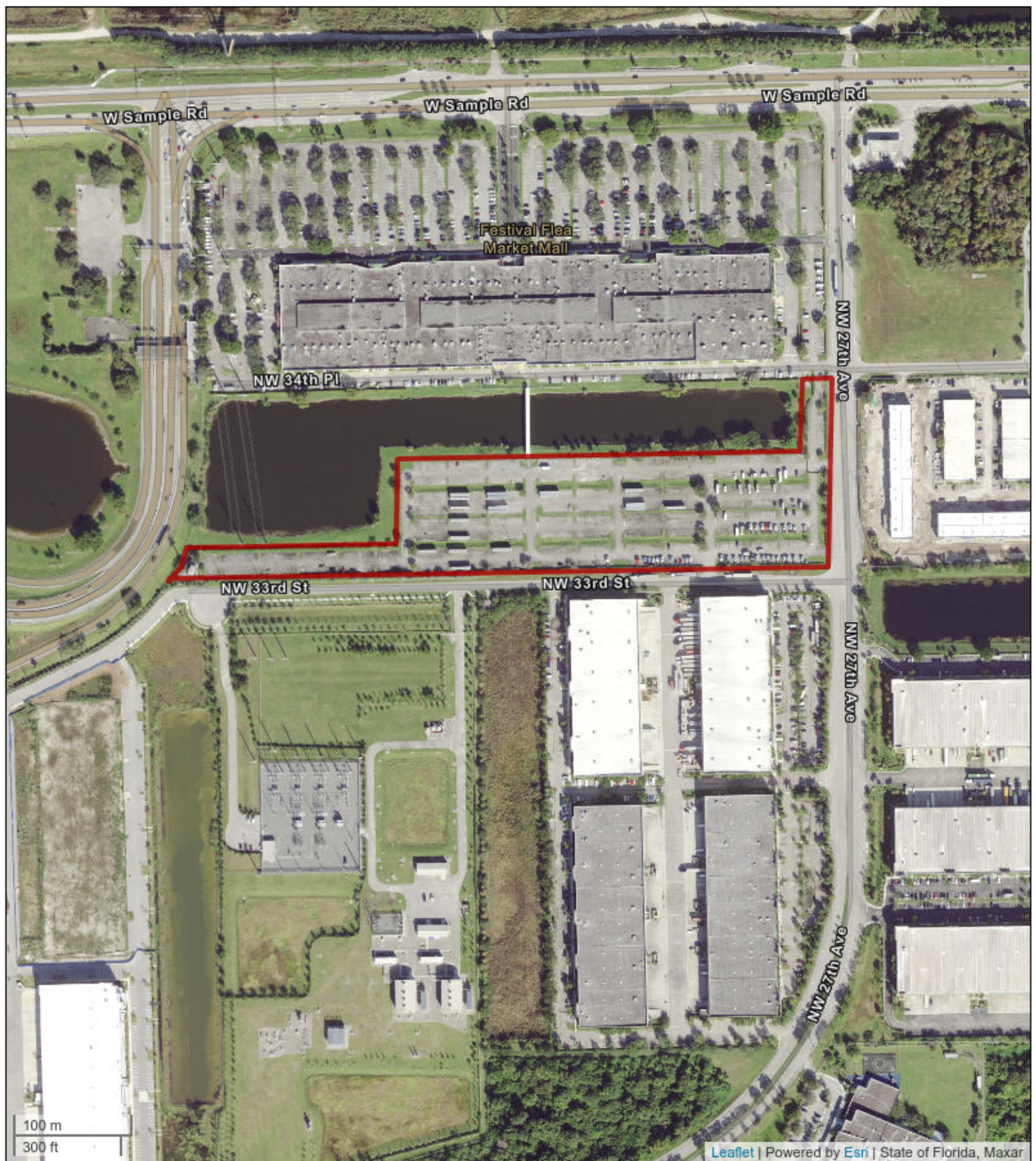


Figure 1

Site Location Map

NW 33rd Street Pompano Beach
 NW 33rd Street & NW 27th Avenue
 Pompano Beach, Florida 33064



PZ23-12000019

08/16/2023

Tree Appraisal -Pompano Beach 3030 NW 33rd Street 12/6/22

Tree #	Address	Common Name	Scientific Name	Latitude	Longitude	DBH (inches)	Condition Rating	Condition	Observations	Disposition	Mitigation Fee
Protected Tree 1	3030 NW 33rd St.	Live Oak	<i>Quercus virginiana</i>	26.2715	-80.1639	15	0.9	Good	Healthy	Relocate or Remove within Construction	\$305.24
Protected Tree 2	3030 NW 33rd St.	Live Oak	<i>Quercus virginiana</i>	26.2714	-80.1639	12	0.75	Good	Healthy	Relocate or Remove within Construction	\$203.49
Protected Tree 3	3030 NW 33rd St.	Live Oak	<i>Quercus virginiana</i>	26.2714	-80.1638	10	0.9	Good	Healthy	Relocate or Remove within Construction	\$203.49
Protected Tree 4	3030 NW 33rd St.	Live Oak	<i>Quercus virginiana</i>	26.2714	-80.1638	13	0.8	Good	Healthy	Relocate or Remove within Construction	\$235.14
Protected Tree 5	3030 NW 33rd St.	Live Oak	<i>Quercus virginiana</i>	26.2712	-80.1638	6	0.3	Very Poor	Poor structure, exposed roots	Remove within Construction	\$40.70
Protected Tree 6	3030 NW 33rd St.	Live Oak	<i>Quercus virginiana</i>	26.2712	-80.1638	9	0.45	Poor	Poor structure, exposed roots, pruning cuts with minor rot	Remove within Construction	\$91.57
Protected Tree 7	3030 NW 33rd St.	Live Oak	<i>Quercus virginiana</i>	26.271	-80.1639	8	0.8	Good	Mechanical damage root and boll	Relocate or Remove within Construction	\$144.70
Protected Tree 8	3030 NW 33rd St.	Live Oak	<i>Quercus virginiana</i>	26.2709	-80.1638	15	0.4	Poor	Poor structure, mowing damage to roots	Remove within Construction	\$135.66
Protected Tree 9	3030 NW 33rd St.	Shortleaf Fig	<i>Ficus citrifolia</i>	26.2707	-80.1642	28	0.8	Good	Multi stem fig healthy	Relocate or Remove within Construction	\$336.00
Protected Tree 10	3030 NW 33rd St.	Gumbo Limbo	<i>Bursera simarouba</i>	26.2707	-80.1641	9	0.7	Good	Multi stem Gumbo Limbo	Relocate or Remove within Construction	\$153.03
Protected Tree 11	3030 NW 33rd St.	Orchid Tree	<i>Bauhinia variegata</i>	26.2712	-80.1635	10	0.2	Very Poor	Severe rot, major limb die back	Remove within Construction	\$25.62
Protected Tree 12	3030 NW 33rd St.	Orchid Tree	<i>Bauhinia variegata</i>	26.2712	-80.1632	8	0.2	Very Poor	Severe rot, major limb die back	Remove within Construction	\$20.50
Protected Tree 13	3030 NW 33rd St.	Orchid Tree	<i>Bauhinia variegata</i>	26.2711	-80.1631	11	0.3	Very Poor	Severe rot, major limb die back	Remove within Construction	\$42.27
Protected Tree 15	3030 NW 33rd St.	Orchid Tree	<i>Bauhinia variegata</i>	26.2708	-80.1631	16	0.1	Very Poor	Mutli stem, poor pruning causing rot	Remove within Construction	\$20.50
Protected Tree 16	3030 NW 33rd St.	Button mangrove	<i>Conocarpus erectus</i>	26.2708	-80.1628	14	0.4	Poor	Multi stem, wind damage, major rot	Remove within Construction	\$121.80
Protected Tree 17	3030 NW 33rd St.	Button mangrove	<i>Conocarpus erectus</i>	26.2708	-80.1628	11	0.4	Poor	Manmade CC attachments, boll damage	Remove within Construction	\$95.70
Protected Tree 18	3030 NW 33rd St.	Live Oak	<i>Quercus virginiana</i>	26.2714	-80.1628	12	0.95	Good	Healthy	Relocate or Remove within Construction	\$257.75
Protected Tree 19	3030 NW 33rd St.	Live Oak	<i>Quercus virginiana</i>	26.2716	-80.1629	14	0.45	Poor	Pruning cuts causing major boll rot	Remove within Construction	\$142.44
Protected Tree 20	3030 NW 33rd St.	Button Mangrove	<i>Bauhinia variegata</i>	26.2716	-80.1621	14	0.3	Very Poor	Mechanical damage, poor pruning	Remove within Construction	\$91.35
Protected Tree 21	3030 NW 33rd St.	Button Mangrove	<i>Bauhinia variegata</i>	26.2716	-80.162	10	0.7	Good	Healthy	Relocate or Remove within Construction	\$152.25
Protected Tree 22	3030 NW 33rd St.	Live Oak	<i>Quercus virginiana</i>	26.2716	-80.1619	10	0.45	Poor	Embedded support strap	Remove within Construction	\$101.75
Protected Tree 23	3030 NW 33rd St.	Live Oak	<i>Quercus virginiana</i>	26.2716	-80.1618	18	0.4	Poor	"V" crotch included bark- pruning cuts	Remove within Construction	\$162.79
Protected Tree 24	3030 NW 33rd St.	Live Oak	<i>Quercus virginiana</i>	26.2716	-80.1615	12	0.4	Poor	Included bark - support strap embedded	Remove within Construction	\$108.53
Protected Tree 25	3030 NW 33rd St.	Live Oak	<i>Quercus virginiana</i>	26.2716	-80.1615	14	0.4	Poor	Exposed roots, "V" crotch, embedded strap	Remove within Construction	\$126.62
Protected Tree 26	3030 NW 33rd St.	Button Mangrove	<i>Bauhinia variegata</i>	26.2716	-80.1613	10	0.3	Very Poor	Major limb damage, rot	Remove within Construction	\$65.25
Protected Tree 27	3030 NW 33rd St.	Button Mangrove	<i>Bauhinia variegata</i>	26.2716	-80.1613	10	0.35	Poor	Mechanical damage - leaning	Remove within Construction	\$76.13
Protected Tree 28	3030 NW 33rd St.	Shortleaf Fig	<i>Ficus citrifolia</i>	26.2717	-80.1613	14	0.3	Very Poor	Exposed roots, rot	Remove within Construction	\$63.00
Protected Tree 29	3030 NW 33rd St.	Live Oak	<i>Quercus virginiana</i>	26.2714	-80.1613	26	0.45	Poor	Leaning , exposed roots	Remove within Construction	\$264.54
Protected Tree 30	3030 NW 33rd St.	Live Oak	<i>Quercus virginiana</i>	26.2713	-80.1612	14	0.45	Poor	Exposed roots, epicormic shoots, leaning	Remove within Construction	\$142.44
Protected Tree 31	3030 NW 33rd St.	Live Oak	<i>Quercus virginiana</i>	26.2712	-80.1614	20	0.45	Poor	"V" crotch - Included bark, pruning cuts	Remove within Construction	\$203.49
Protected Tree 32	3030 NW 33rd St.	Live Oak	<i>Quercus virginiana</i>	26.271	-80.1613	18	0.45	Poor	"V" crotch, limb damage	Remove within Construction	\$183.14
Protected Tree 33	3030 NW 33rd St.	Live Oak	<i>Quercus virginiana</i>	26.2709	-80.1613	18	0.35	Poor	Pruning cuts, wind damage, exposed roots	Remove within Construction	\$142.44
Protected Tree 34	3030 NW 33rd St.	Sabal Palm	<i>Sabal Palmetto</i>	26.2708	-80.1616	14	0.8	Good	Healthy close to electrical infrastructure	Remove within Construction	\$298.82
Protected Tree 35	3030 NW 33rd St.	Orchid Tree	<i>Bauhinia variegata</i>	26.2712	-80.1624	16	0.1	Very Poor	Major rot	Remove within Construction	\$20.50
Protected Tree 36	3030 NW 33rd St.	Orchid Tree	<i>Bauhinia variegata</i>	26.2708	-80.1624	12	0.2	Very Poor	Exposed roots, minor rot, included bark, leaning	Remove within Construction	\$30.74
Protected Tree 37	3030 NW 33rd St.	Orchid Tree	<i>Bauhinia variegata</i>	26.2708	-80.1622	16	0.2	Very Poor	"V" crotch, included bark, mechanical damage, pruning cuts	Remove within Construction	\$40.99
Protected Tree 38.1 R.O.W.	3030 NW 33rd St.	Gumbo Limbo	<i>Bursera simaruba</i>	26.2708	-80.162	5	1	Good	Healthy Recently planted in ROW	Relocate or Remove within Construction	\$121.45
Protected Tree 38.2 R.O.W.	3030 NW 33rd St.	Gumbo Limbo	<i>Bursera simaruba</i>	26.2707	-80.1619	5	1	Good	Healthy Recently planted in ROW	Relocate or Remove within Construction	\$121.45
Protected Tree 38.3 R.O.W.	3030 NW 33rd St.	Gumbo Limbo	<i>Bursera simaruba</i>	26.2708	-80.1619	6	1	Good	Healthy Recently planted in ROW	Relocate or Remove within Construction	\$145.74
Protected Tree 38	3030 NW 33rd St.	Orchid Tree	<i>Bauhinia variegata</i>	26.2708	-80.1618	16	0.3	Very Poor	Boll rot, numerous epicormic shoots	Remove within Construction	\$61.49
Protected Tree 40	3030 NW 33rd St.	Orchid Tree	<i>Bauhinia variegata</i>	26.2708	-80.1611	14	0.2	Very Poor	Rot, leaning	Remove within Construction	\$35.87
Protected Tree 41	3030 NW 33rd St.	Gumbo Limbo	<i>Bursera simaruba</i>	26.2708	-80.1609	12	0.3	Very Poor	Pruning cuts causing rot in upper boll	Remove within Construction	\$87.44
Protected Tree 42.1 R.O.W.	3030 NW 33rd St.	Gumbo Limbo	<i>Bursera simaruba</i>	26.2708	-80.1607	5	1	Good	Healthy, Recently planted in ROW	Relocate or Remove within Construction	\$121.45
Protected Tree 42.2 R.O.W.	3030 NW 33rd St.	Gumbo Limbo	<i>Bursera simaruba</i>	26.2708	-80.1606	5	1	Good	Healthy, Recently planted in ROW	Relocate or Remove within Construction	\$121.45
Protected Tree 42.3 R.O.W.	3030 NW 33rd St.	Gumbo Limbo	<i>Bursera simaruba</i>	26.2708	-80.1605	5	1	Good	Healthy, Recently planted in ROW	Relocate or Remove within Construction	\$121.45
Protected Tree 42.4 R.O.W.	3030 NW 33rd St.	Gumbo Limbo	<i>Bursera simaruba</i>	26.2708	-80.1605	5	1	Good	Healthy, Recently planted in ROW	Relocate or Remove within Construction	\$121.45
Protected Tree 42.5 R.O.W.	3030 NW 33rd St.	Gumbo Limbo	<i>Bursera simaruba</i>	26.2708	-80.1604	2	0.9	Good	Healthy, Recently planted in ROW	Relocate or Remove within Construction	\$43.72
Protected Tree 42	3030 NW 33rd St.	Live Oak	<i>Quercus virginiana</i>	26.271	-80.1605	6	0.4	Poor	Small structure, pruning cuts, numerous epicormic shoots	Remove within Construction	\$54.26
Protected Tree 43	3030 NW 33rd St.	Live Oak	<i>Quercus virginiana</i>	26.2712	-80.1605	10	0.45	Poor	Included bark, low crotch	Remove within Construction	\$101.75
Protected Tree 44	3030 NW 33rd St.	Orchid Tree	<i>Bauhinia variegata</i>	26.2711	-80.161	9	0.2	Very Poor	Numerous stump sprouts, major limb dieback, rot	Remove within Construction	\$23.06
Protected Tree 45 palm	3030 NW 33rd St.	Sabal Palm	<i>Bauhinia variegata</i>	26.2717	-80.1612	20	0.35	Poor	Boll wound - oozing	Remove within Construction	\$186.76
Protected Tree 46	3030 NW 33rd St.	Shortleaf Fig	<i>Ficus citrifolia</i>	26.2717	-80.1611	48	0.85	Good	Healthy, multi stem, pruning cuts,	Relocate or Remove within Construction	\$612.00
Protected Tree 47	3030 NW 33rd St.	Shortleaf Fig	<i>Ficus citrifolia</i>	26.2717	-80.1609	44	0.45	Poor	Large exposed roots, pruning cuts,	Remove within Construction	\$297.00
Protected Tree 48	3030 NW 33rd St.	Live Oak	<i>Quercus virginiana</i>	26.2717	-80.1608	16	0.6	Fair	Healthy	Relocate or Remove within Construction	\$217.06
Protected Tree 49	3030 NW 33rd St.	Shortleaf Fig	<i>Ficus citrifolia</i>	26.2717	-80.1606	44	0.5	Fair	Exposed roots, pruning cuts	Remove within Construction	\$330.00
Protected Tree 50	3030 NW 33rd St.	Live Oak	<i>Quercus virginiana</i>	26.2716	-80.1605	16	0.35	Poor	Included, pruning cuts, poor structure	Remove within Construction	\$126.62
Protected Tree 51	3030 NW 33rd St.	Gumbo Limbo	<i>Bursera simaruba</i>	26.2717	-80.1605	12	0.35	Poor	Included, pruning cuts, poor structure	Remove within Construction	\$102.02
Protected Tree 52	3030 NW 33rd St.	Live Oak	<i>Quercus virginiana</i>	26.2718	-80.1605	14	0.4	Poor	Support strap embedded, low crotch, exposed roots	Remove within Construction	\$126.62
Protected Tree 53	3030 NW 33rd St.	Sabal Palm	<i>Sabal Palmetto</i>	26.272	-80.1605	14	0.3	Very Poor	Leaning/bent	Remove within Construction	\$112.06
Protected Tree 54	3030 NW 33rd St.	Live Oak	<i>Quercus virginiana</i>	26.2715	-80.1603	12	0.45	Poor	Leaning, included bark, pruning cuts	Remove within Construction	\$122.09
Protected Tree 55	3030 NW 33rd St.	Live Oak	<i>Quercus virginiana</i>	26.2713	-80.1603	12	0.55	Fair	Poor structure, bent/leaning	Remove within Construction	\$149.23
Protected Tree 56	3030 NW 33rd St.	Live Oak	<i>Quercus virginiana</i>	26.2713	-80.1603	12	0.75	Good	Healthy	Remove within Construction	\$203.49
Protected Tree 57	3030 NW 33rd St.	Live Oak	<i>Quercus virginiana</i>	26.2712	-80.1603	10	0.5	Fair	Pruning cuts causing rot, poor structure	Remove within Construction	\$123.05

DRC

PZ23-12000019

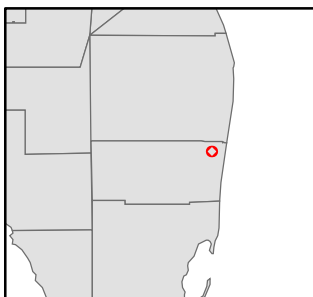
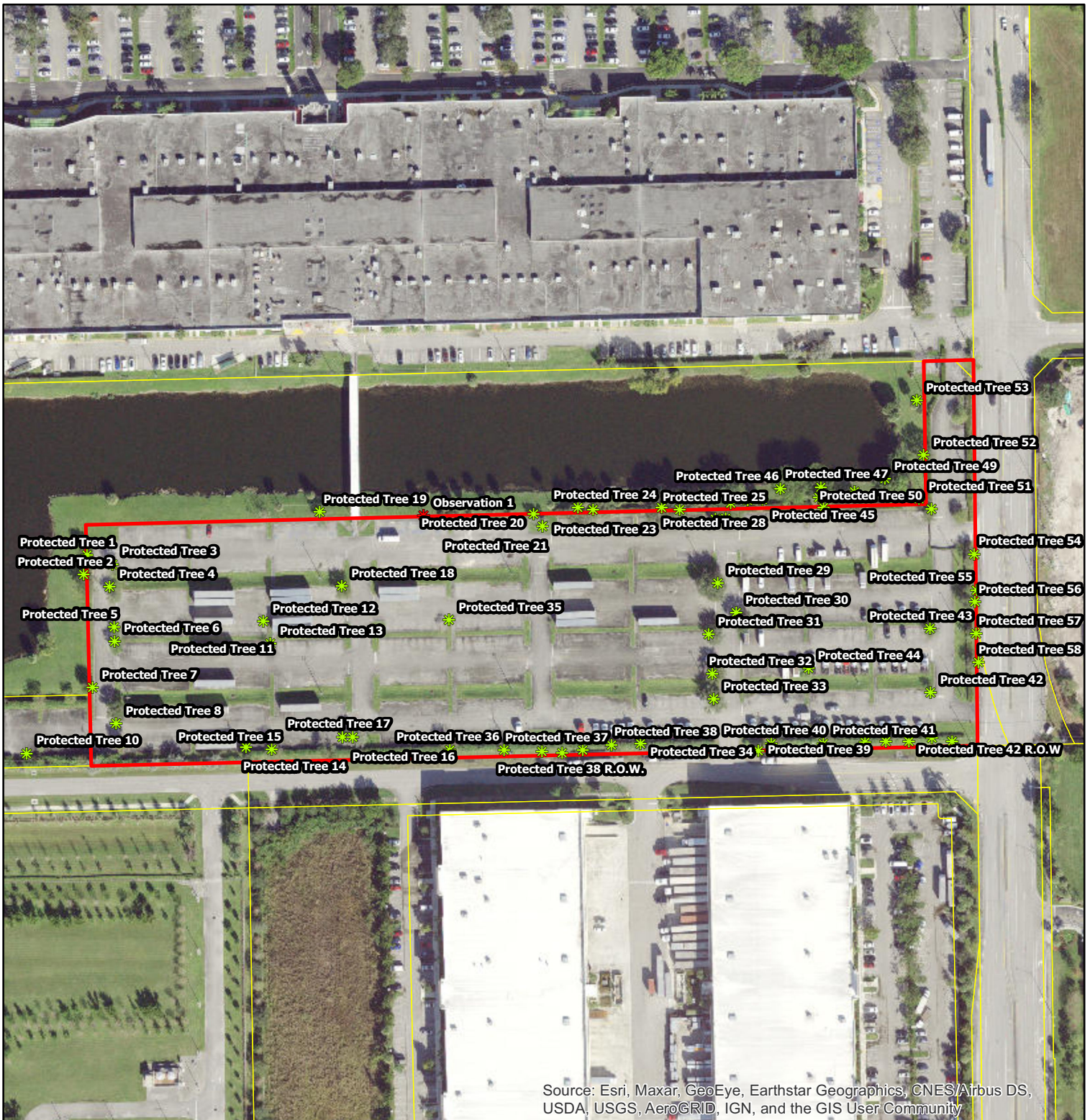
Protected Tree 58	3030 NW 33rd St.	Live Oak	<i>Quercus virginiana</i>	26.2711	-80.1603	10	0.8	Good	Healthy	Relocate or Remove within Construction	\$180.88
Protected Tree 59.1 palm	3030 NW 33rd St.	Sabal Palm	<i>Sabal Palmetto</i>	26.2716	-80.1609	25	0.25	Very Poor	Bark loss	Remove within Construction	\$166.75
Protected Tree 59.2 palm	3030 NW 33rd St.	Sabal Palm	<i>Sabal Palmetto</i>	26.2717	-80.1609	25	0.35	Poor	Upper boll rot	Remove within Construction	\$233.45
										Total mitigation if all tree are removed	\$14,790.14

Total Healthy Sabal Palms	Average Height(ft)	Average Condition Rating	Cost per ft (\$)	Deposition	Mitigation Fee
16	18	0.7	26.68	Relocate or remove	\$5,378.69

Species (Common Name)	Cost per inch(\$)
Live Oak	\$22.61
Gumbo Limbo	\$24.29
Button Mangrove	\$21.75
Shortleaf Fig	\$15.00
Orchid Tree	\$12.81
Sabal Palm per ft	\$26.68

Wholesale Plant Nursery
Cocoplum Group LLC - 813-997-7758
Gleason Landscaping LLC - 321-749-7326
Freund Flowering Trees - 305-242-5651
Top Tropicals - 239-689-5745
Native Tree Nursery Inc. - 305-247-4499

DRC



Broward County,
Florida

NW 33rd Street
Pompano Beach, FL 33069
Date: 12/6/2022

Legend

- Parcel
- * Observation
- * Protected Tree

Protected Tree Location

0 100 200 400
Feet



PZ23-12000019

08/16/2023